



# COMBI ANT KILLER BAIT

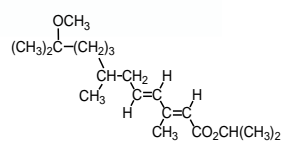


**PROTECT® COMBI ant killer bait** is a ready-to-use bait station containing special bait attracting of black (garden) *Lasius* ants species containing Insect Growth Regulator and neonicotinoid insecticide. For effective control of ants in homes (kitchens, bathrooms), balconies, terraces, cellars, winter-gardens, etc.

### ADVANTAGES:

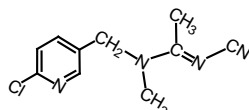
- Total colony elimination is achieved.
- Irresistible blend of bait containing S-methoprene active ingredient, attracts and nutrients.
- Effective residual control.
- Bait consumption can be monitored through the transparent blister wall.
- Child-resistant packing, no odour product.

### ACTIVE INGREDIENTS:



**w/w 0.25 % (2.50 g/kg) S-methoprene**

Acts as an insect juvenile hormone analogue that inhibits insect maturation processes. The mature stages lose their capacity to reproduce, thus the cycle of reproduction stops and infestations diminish.



**w/w 0.10 % (1.00 g/kg) acetamiprid**

It is a contact insecticide for sucking-type insects. It is a synthetic organic compound of the family of chemicals that acts as neonicotinoid insecticides. It acts on its target organisms by antagonising the nicotine acetylcholine receptor of neural pathways of the insects, affecting synapse.

**PRODUCT FOR  
PROFESSIONAL USE**

**STABILITY/ SHELF LIFE:  
2 years from date of  
manufacture, if stored in  
original unopened packaging  
in a dry and cool place**

### PACKING:

KS-21740



24 x 30 x  
2 g blister



50 cartons

### PHYSICAL PROPERTIES:

#### APPEARANCE:

yellowish granules in a transparent plastic bait station

#### ODOUR:

characteristic of product

#### SOLUBILITY:

partially in water





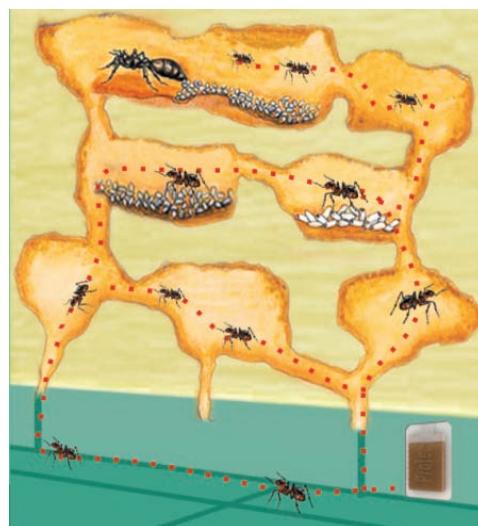
# COMBI ANT KILLER BAIT



The black or garden ants (*Lasius niger*, *Lasius neglectus*) often visit houses in search for food. The workers carry the food obtained in the nests usually situated in the garden, near the foundation of the house. PROTECT® Combi ant killer bait contains active ingredients that have slow killing and queen sterilizing effect. This ensures that, after some time, not only the food carrying workers but also the individuals living within the nest will die out.

## INSTRUCTIONS FOR USE:

Cut the top of the plastic station containing the bait along the dotted line. Peel the protective foil off the sticky pad on the back of the station then fix the bait station using the sticky pad either in horizontal or vertical position on a suitable surface along the foraging/migrating route of the ants. Do not apply to porous surface or rotten plastering. Stick the bait station so that the entrance is positioned on the top or at the side and take care that the bait does not spill. Death of ants can be expected after two or three days.



To achieve prolonged efficacy, it is recommended to use the bait station in the same place for a longer time. Do not apply any other insecticide or chemical while using the product as this may degrade the efficacy of the bait. Keep the bait away from moisture. Should you observe that the ants do not visit the bait, move the station to another place. The product is not effective against Pharaoh's ants; for this purpose, PROTECT® Pharaoh's ant killer bait is recommended.

## STABILITY:

3 years if stored in original unopened package in a dark, dry and cool place. Keep away from foodstuffs, medicines.

Use insecticides safely. Always read the label and product information before use.

