

BIOPREN® 50 LFL LIQUID FLY LARVICIDE

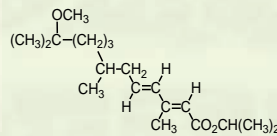


BIOPREN® 50 LFL is an emulsifiable larvicide concentrate for the effective control of house flies in livestock/farm buildings, poultry houses, barns, etc. Contains insect growth regulator S-methoprene in microencapsulated and free form. May be used alone or in combination with adulticides. To be mixed with water and applied with sprayer, such as hand-held, backpack, or power sprayer capable of delivering coarse surface wetting spray.

ADVANTAGES:

- Eliminate less visible part of fly population.
- Significant efficacy and long lasting residuality.
- Effective against the fly larvae resistant to synthetic pyrethroids.
- Not toxic to vertebrates and environment friendly.
- Adequate for pre-hatch application of fly.
- Does not cause unpleasant odour when used as directed.

ACTIVE INGREDIENT:



w/w 5.00 % (51.50 g/l) S-methoprene





Acts as an insect juvenile hormone analogue that inhibits insect maturation processes. Prevents reproduction of flies.



**PRODUCT FOR
PROFESSIONAL AND
AMATEUR USE**

**EXPIRATION PERIOD:
2 years**

PACKING:

KS-21598	 12 x 1 L	 32 cartons
KS-21597	 2 x 5 L	 33 cartons

PHYSICAL PROPERTIES:

APPEARANCE: blueish liquid
ODOUR: none
SOLUBILITY: practically insoluble in water
RELATIVE DENSITY: 1.03 g/cm³

STABILITY:

If stored in original closed packaging in a dry and cool place protected from radiant heat and direct sunlight at max. 35 °C, it can be used for 2 years from manufacture. Always store unused product in a dry, cool place, in well ventilated area, out of direct sunlight. Keep out of reach domestic animals.

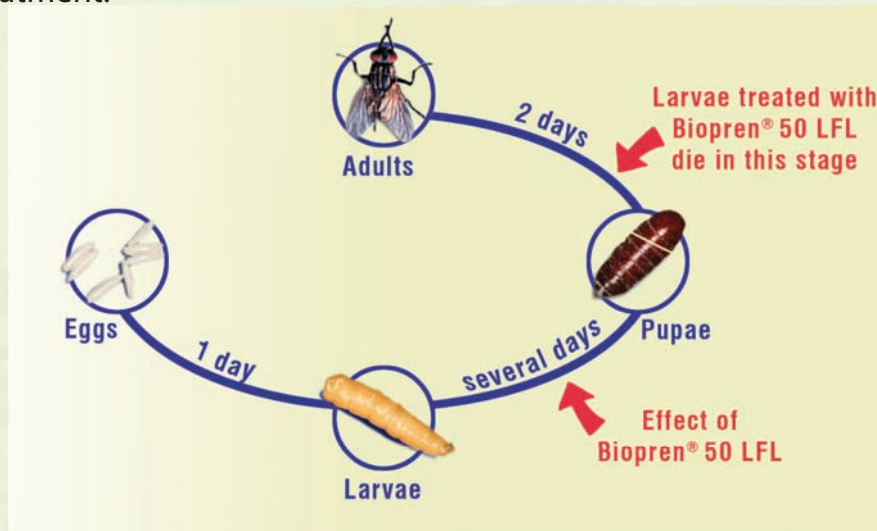
Use insecticides safely. Always read the label and product information before use.



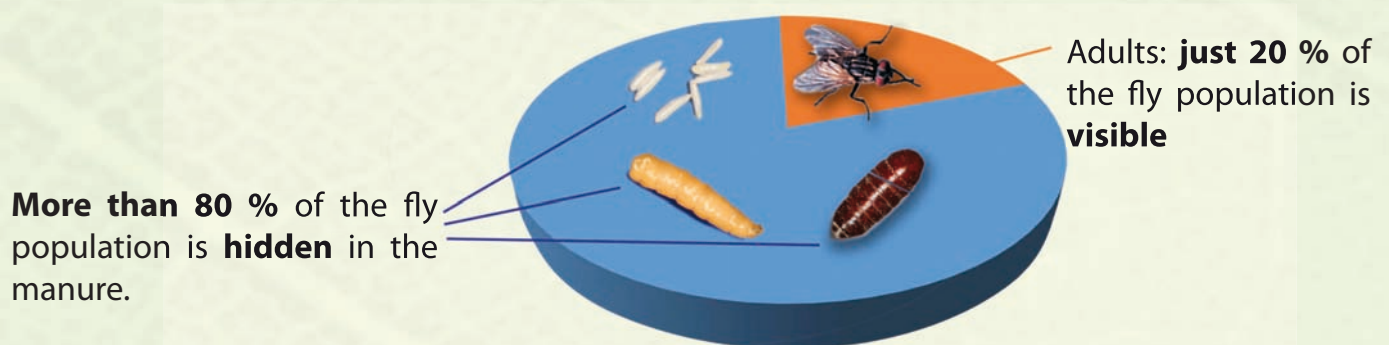
BIOPREN® 50 LFL LIQUID FLY LARVICIDE



The S-methoprene is an insect juvenile hormone analogue (JHA) which mimics the action of an insect growth regulating hormone and interferes with the insect's life cycle, preventing it from reaching maturity. The mature stages lose their capacity to reproduce. The cycle of reproduction stops and the number of flies drops. S-methoprene exhibits especially high activity against insect Diptera and Coleoptera. This S-methoprene based formulation offers several advantages against flies. It is highly selective and target specific, with low mammalian toxicity and favourable environmental profile. Since S-methoprene does not kill adult flies directly, it is sometimes used in combination with fast acting insecticides with low mammalian toxicity, thus providing fast knockdown as well as extended residual activity. WHO allows the use of S-methoprene even for potable water treatment.



BIOPREN® 50 LFL eliminates the less visible part of fly population. This part consists of the early development stages (eggs, larvae and pupae) which account for over 80% of the total population. **BIOPREN® 50 LFL** reduces significantly the number of the all new emerging adult flies over a period of 8 to 12 weeks after the treatment with the larvicide. The larvae continue to become pupae, but they die prior to developing into adults. Thanks to the prolonged release of the S methoprene, the formulation is a long-lasting insecticide. **BIOPREN® 50 LFL** can be used against fly larvae even if they are resistant to synthetic pyrethroids.



BIOPREN® 50 LFL LIQUID FLY LARVICIDE



BIOPREN® 50 LFL will control house flies in specific treatment areas such as:

- livestock housing
- poultry houses
- swine facilities
- animal quarters
- kennels
- outdoor pet or animal runs or enclosures
- pet bedding
- barns

BIOPREN® 50 LFL is recommended to be used with other adulticides or alone, and as an aid to prevent the development of insecticide resistance.

BIOPREN® 50 LFL does not cause unpleasant odour when used as directed.

MIXING INSTRUCTIONS

BIOPREN® 50 LFL has to be mixed with water and applied with sprayer, such as hand-held, backpack, or power sprayer capable of delivering coarse surface wetting spray.

Mixing Steps:

Be sure sprayer is clean. If it is contaminated with any material, injury or sprayer clogging may result.

1. Fill sprayer tank with water to half of its volume.
2. Pour the amount of **BIOPREN® 50 LFL** into a mixing vessel according to dosage instructions below, and dilute it with same amount of water.
3. To get a homogeneous pre-diluted mix, stir it well.
4. Add this mixture into the sprayer tank and then rinse out the mixing vessel with water.
5. Agitate well the content of tank.
6. Fill sprayer tank with water to final volume.
7. Agitate well the content of tank again.
8. The prepared dilutions have to be used within 24 hours. During the treatment, the working solution should be shaken or agitated from time to time, or if unused for several hours.

TREATMENTS IN COMBINATION WITH AN ADULTICIDE

BIOPREN® 50 LFL may be combined (not tank mixed) with other insecticides for knockdown and more rapid control of adult house flies, such as Peststop® 10 EC to be applied by cold fogging or Peststop® Combi 8 CS to be applied by surface spraying. The combination provides immediate control of adult insects, while disturbs the development of the immature stages of the larvae. This application should conform to use precautions and use directions for both products.



BIOPREN® 50 LFL

LIQUID FLY LARVICIDE



DIRECTION FOR USE AGAINST FLIES:

SITUATION	PEST	DOSAGE to treat 100 m ²	CRITICAL COMMENTS
Piggeries	House fly (<i>Musca Domestica</i>)	200-240 ml/ 5 litre working solution Note: apply this dosage on 10 cm thick manure	<i>Slatted floor:</i> Apply on the 3 rd day after the introduction of new livestock. Treat the whole floor of manure-pit. It is necessary to repeat treatment after each removal of dung. <i>Deep litter:</i> Apply on every new layer of litter and repeat the treatment after every further layer of 8 - 10 cm.
Poultry Farms			<i>Cage:</i> Treat the accumulated manure under the cages. <i>Deep litter:</i> See instructions for piggeries.
Cattle Stables			See instructions for piggeries for adequate cases.

Apply **BIOPREN® 50 LFL** as a general surface treating product to areas where house flies breed. Apply working solution to known and suspected breeding sites (such as moist areas with decaying organic matter). For drains, apply dilution into and around the drain and catch basin area. For surface applications, thoroughly wet manure, litter and garbage handling areas. Do not make interior applications of **BIOPREN® 50 LFL** in areas of facility where animals are present – always treat empty facilities with animals removed in advance. Treat bird cages or stock pens only after removal of livestock.

Allow treated areas to dry before allowing livestock back to the facility.

Do not contaminate or apply to food or foodstuffs, water or watering equipment. Control will be enhanced when facilities are cleaned.

